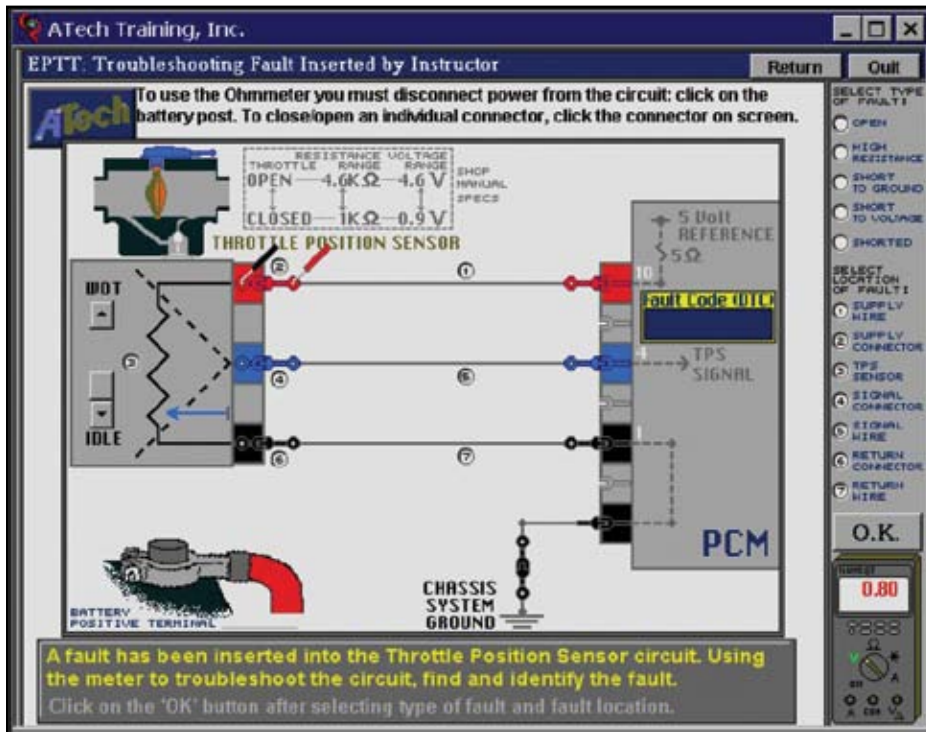
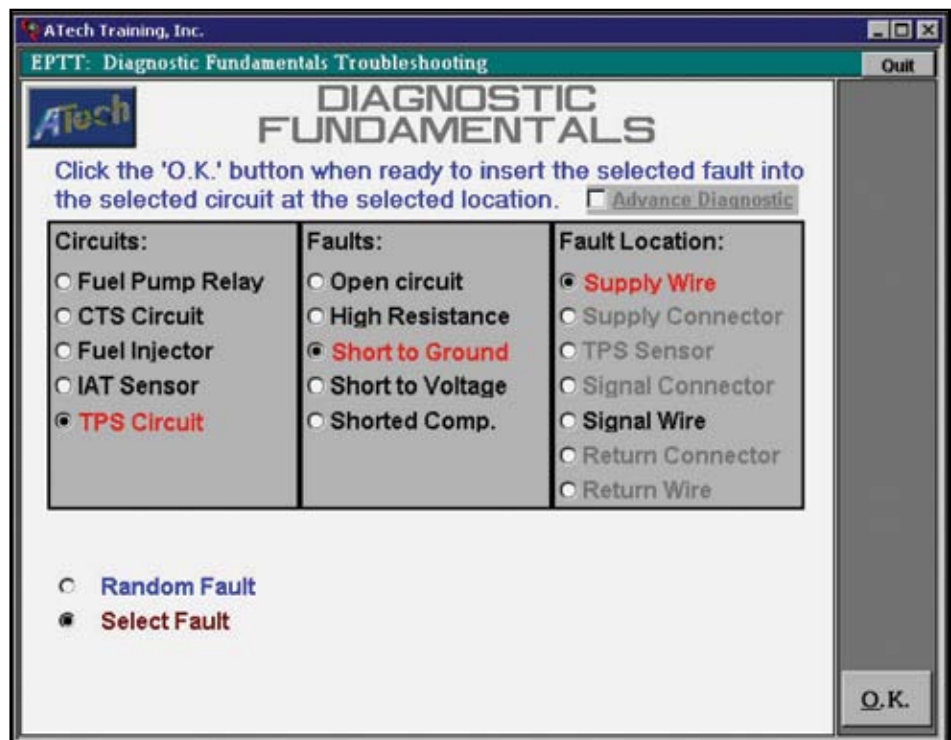


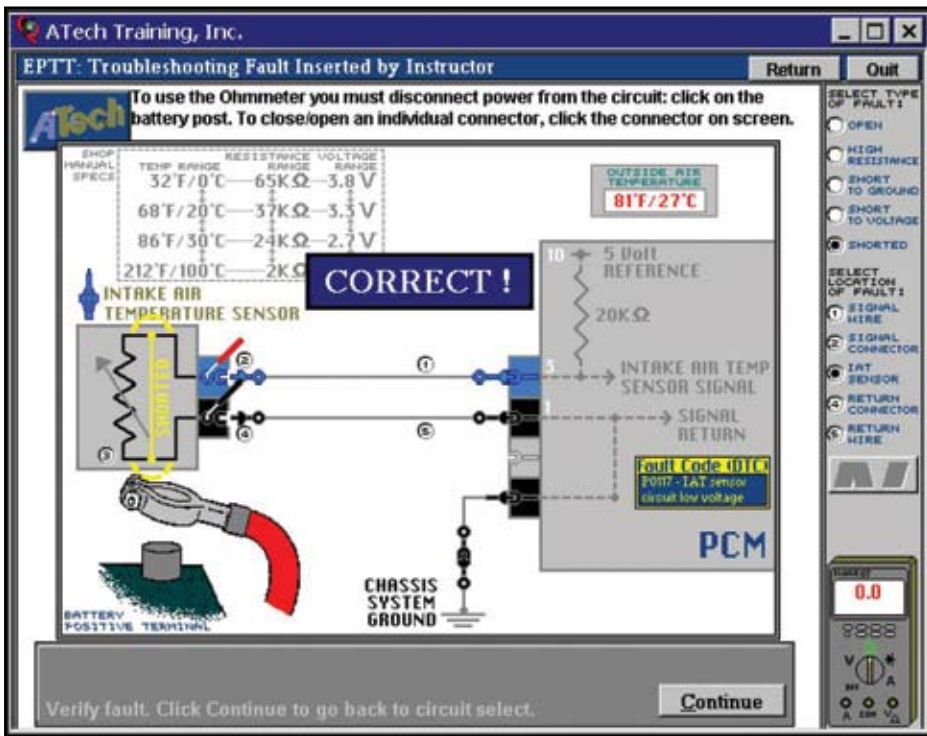
Troubleshooting Skill Development (model 3631/3631N)



- Independent student practice - no instructor intervention required
- Selection from one of five circuits for troubleshooting:
 - Throttle Position Sensor
 - Fuel Pump and Relay
 - Fuel Injector
 - Engine Coolant Temperature Sensor
 - Intake Air Temperature Sensor
- Instructor can select circuit, fault type, and location
- Computer controlled automatic fault insertion and random fault mode
- Network Version Available - model 3631N

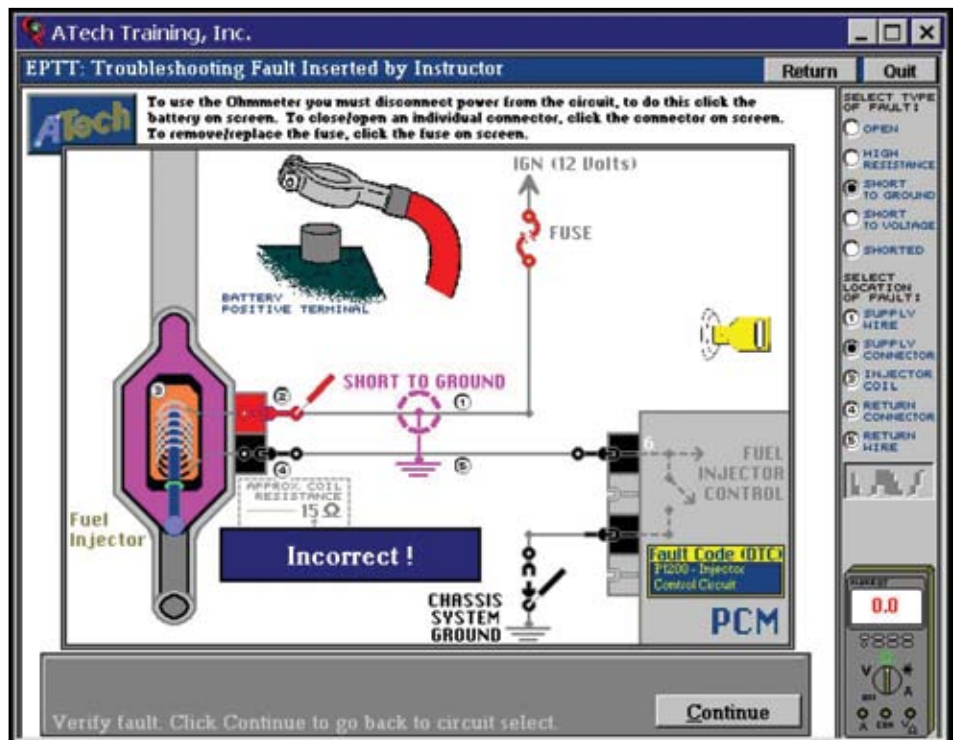
- More than 60 real world faults
- Multiple fault types:
 - Opens in Wires and Connectors
 - High Resistance in Wires and Connectors
 - Short to Voltage
 - Short to Ground
 - Open Components
 - Shorted Components
- Highly interactive:
 - TPS Circuit illustrates mechanical throttle valve operation
 - Click to Disconnect Battery
 - Slider adjusts TPS Position





- Service manual specifications included on screen
- Temperature Resistance relationships displayed on screen
- Built-in digital multimeter with interactive probes
- Real world DTCs shown on scan tool readout screen
- Ohmmeter prompt given to disconnect circuit power
- Connectors can be disconnected
- Fuse can be removed and ground disconnected

- No repeated faults until all circuit faults have been initially completed
- Short-to-ground faults can blow fuses
- Two skill levels included:
 - Training Mode
 - Advanced Mode
- Training Mode allows measurement across connector pins
- Advanced Mode only allows back probing of connectors
- Probes automatically moved from disallowed connection points in Advanced Mode



Call Now to Place your Order (Press 2 for Sales)

ATEch Training, Inc.
12290 Chandler Drive • Walton, KY 41094
Toll Free: 1-888-738-9924
Phone: 859-485-7229 • Fax: 859-485-7299
E-mail: sales@atechtraining.com
www.atechtraining.com

ATEch
Automotive Technology